

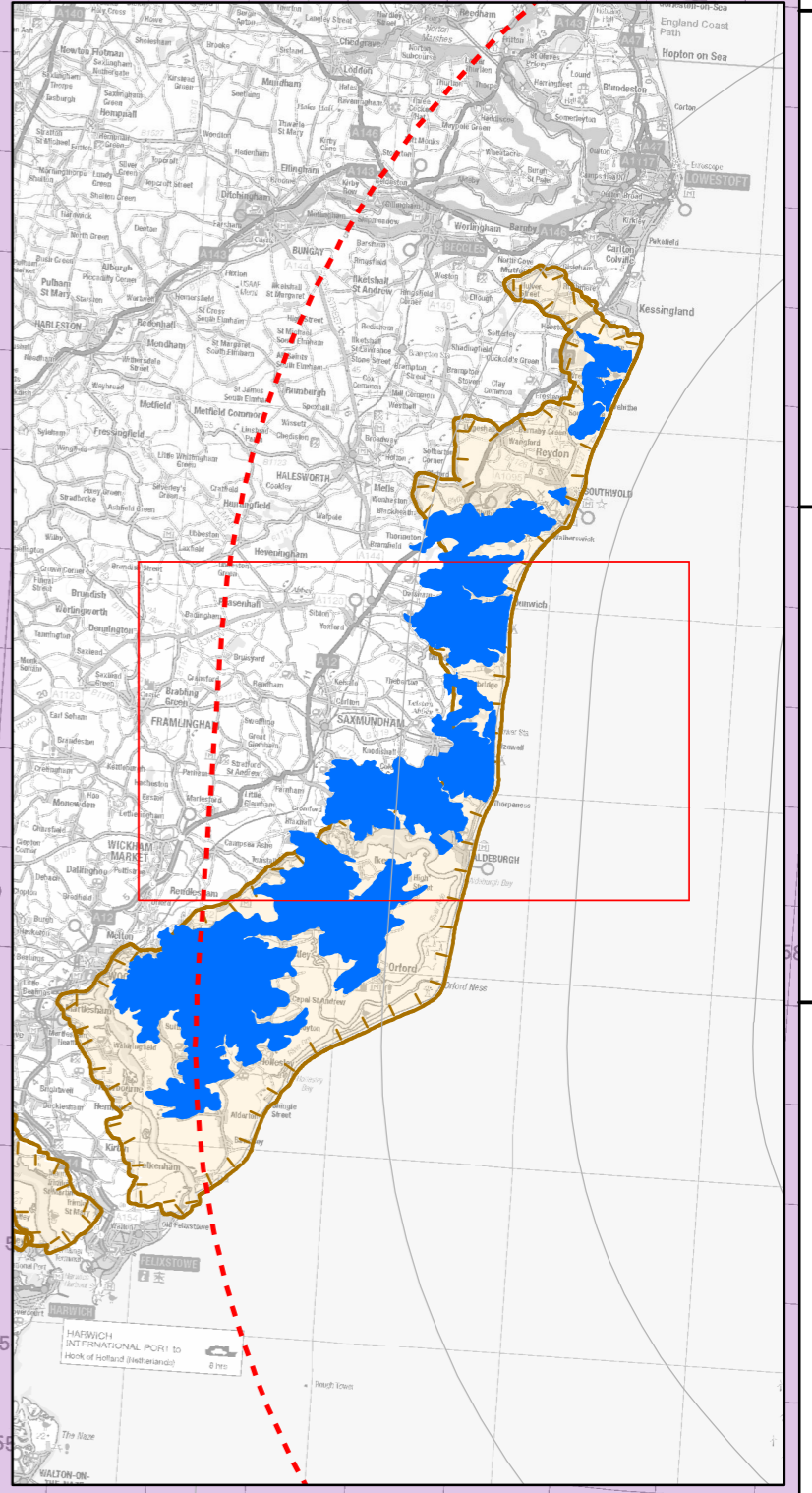
- Legend**
- 10km Radii
  - 50km SLVIA Study Area
  - Suffolk Coast & Heaths AONB
  - Suffolk Landscape Character Assessment, 2018
- 7. Estate Sandlands**
- c. Walberswick to Westleton and Dunwich
  - d. Leiston and Aldringham to Snape, Thorpeness and Aldeburgh
  - e. Hollesley, Rendlesham and Tunstall Forests to Sudbourne

**Blade Tip ZTV**

No. of Blade Tips Theoretically Visible

1 - 10
11 - 20
21 - 30
31 - 40
41 - 50
51 - 60

Blade tip:	300m
DTM:	OS T50
DTM resolution:	50m
Observer height:	2m
Surface features:	Excluded
Earth curvature:	Included



	4	30/08/2019	LA	Fourth issue		
	3	13/08/2019	TH	Third issue	Prepared:	TH
	2	17/07/2019	TH	Second issue	Checked:	SM
	<b>Rev</b>	<b>Date</b>	<b>By</b>	<b>Comment</b>	<b>Approved:</b>	<b>LT</b>

1:75,000	
Scale @ A3	
Source: © Crown copyright and database rights 2019. Ordnance Survey 0100031673. The Crown Estate © Crown Copyright (2019). © Natural England copyright. Contains Ordnance Survey data © Crown copyright and database right 2019. This map has been produced to the latest known information at the time of issue, and has been produced for your information only. To the fullest extent permitted by law, we accept no responsibility or liability (whether in contract, tort (including negligence) or otherwise) in respect of any errors or omissions in the information contained in the map and shall not be liable for any loss, damage or expense caused by such errors or omissions.	

**East Anglia TWO**

Blade Tip ZTV (300m) with Landscape Character 7 Estate Sandlands

<b>Drg No</b>	EA2-DWF-ENV-REP-IBR-000920	Datum: WGS 1984 Projection: Zone 31N
<b>Rev</b>	4	
<b>Date</b>	30/08/19	
<b>Figure</b>	28.17j	